

# AG Power Supply Parts

AG

STK0065:  
Transformer Replacement Kit with  
Mounting Screws

STK0093:  
AG Power Board Replacement Kit  
Includes:  
\*CBP0004 Power Supply Assy  
\*ECP0123-SVC Fuse 2A,5x20mm,250VAC (Use for 110VAC)  
\*ECP0124-SVC Fuse 1A,5x20mm,250VAC (Use for 220VAC)  
\*15486 HDW Screw #6-32 X 5/16  
\*STK0095 Wire and Cable Replacement Kit

APK0042:  
AG Flow Switch  
Assy

STK0094:  
Display PC Board Replacement Kit  
Includes:  
\*846-2 Display Board for AG  
20011 Modular Cable Assy for AG

APP0008:  
Fuse Assy for AG  
Includes 2A Fuse  
(ECP0123-SVC),  
Holder, and Wires

ECP0123-SVC:  
(Use for 110VAC), Fuse,  
2A,5x20mm,250VAC  
or  
ECP0124-SVC:  
(Use for 220VAC), Fuse,  
1A,5x20mm,250VAC

Used on AGR  
and AGN

APK0020:  
Flow Switch Jumper  
Cable Assy Kit  
Included with AGR  
Only

STK0092:  
AG Cover Replacement Kit  
Includes:  
\*PCP0150 Molded Cover for AG  
\*LBP0106 Label, AG Cover Control  
\*LBP0107 Label, AG Cover Top  
\*GKP0111 O-Ring for AG Cover  
\*GKP0013 O-Ring Cord 3.5mm  
\*15403 #6-32 x 3/4 Screw PPMS

STK0095:  
Wire and Cable Replacement Kit  
Includes:  
\*22AK1800522 Wire Assy 18AWG, UL 1007, Black  
\*22AR1800522 Wire Assy 18AWG, UL 1007 Red  
\*22AY1800522 Wire Assy 18AWG, UL 1007 Yellow  
\*22AW1800522 Wire Assy 18AWG, UL 1007 White  
20011 Modular Cable Assy

\*Cannot be ordered separately

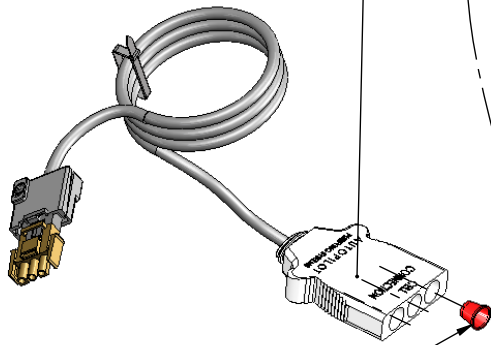
AG

# AG PLUMBING

## Return Jet Manifold With Cell

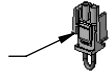
APK0018:  
Return Jet Adaptor for AG  
Includes:  
PLP0080 Street Elbow 1-1/2" MIPT X 2" Slip  
312-C-SVC Union Half, 1.5" Slip/2" Spigot x MTU  
\*PCP0122 PVC Pipe, 1-1/2" ID x 2-3/8" Long

952-SVC:  
Cell Cord 12 ft with 3 Pin  
MATE-N-LOK Connector  
or  
952-24:  
Cell Cord 24 ft

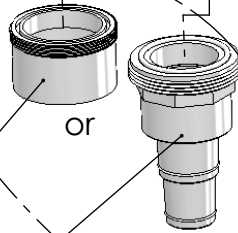


19050:  
Red Protective Cap

APK0020:  
Flow Switch Jumper Kit



312-D:  
Union Half, 2" Slip x Male Thread Union  
(with O-Ring 19069-0)



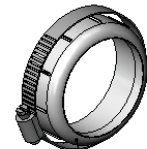
312-G:  
Union Half, MT Union x Flex  
(with O-Ring 19070-0)

APK0039:  
Plumbing Package for Manifold  
for Return Jet

Includes:  
PLP0080 Street Elbow 1-1/2" MIPT X 2" Slip  
312-G Union Half, Male Thread Union x 1.5"/1.25" Flex Hose  
312-D Union Half, Male Thread Union x 2" Slip  
312-C-SVC Union Half, 1.5" Slip/2" Spigot x Male Thread Union  
\*PCP0122 PVC Pipe, 1-1/2" ID x 2-3/8" Long

Return Jet Manifold  
Included with AGR  
Includes:  
PPC1 PPC1 Replacement Cell  
952-SVC Cell Cord  
APK0039 Plumbing Pkg. for Manifold  
APK0020 Flow Switch Jumper Kit

PPC1:  
PPC1 Replacement Cell  
with Female Unions



STK0048:  
Cracked Union Nut  
Service Kit

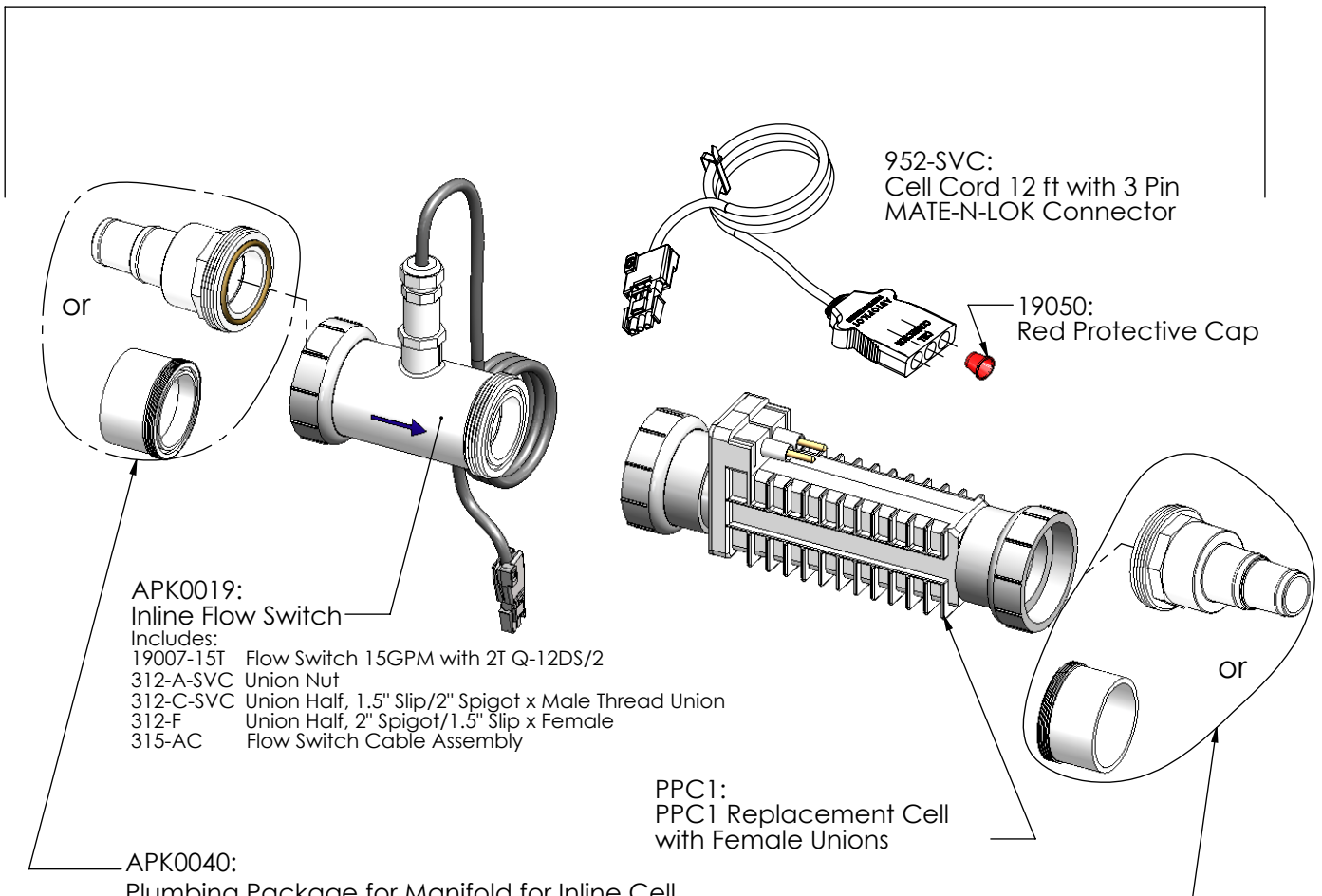
\*Cannot be ordered separately

# AGN PLUMBING

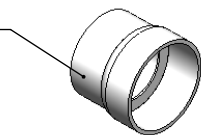
## Inline Cell With Flow Switch

AG

Inline Cell  
 Included with AGN  
 Includes:  
 PPC1 PPC1 Replacement Cell  
 952-SVC Cell Cord  
 APK0040 Plumbing Package for Manifold  
 APK0019 Flow Switch Kit



19059:  
 Metric Adapter  
 63mm ID Slip x 2" Spigot  
 Quantity of 2 Needed  
 Included in Metric Kits  
 ONLY (Not Glued)



STK0048:  
 Cracked Union Nut  
 Service Kit

